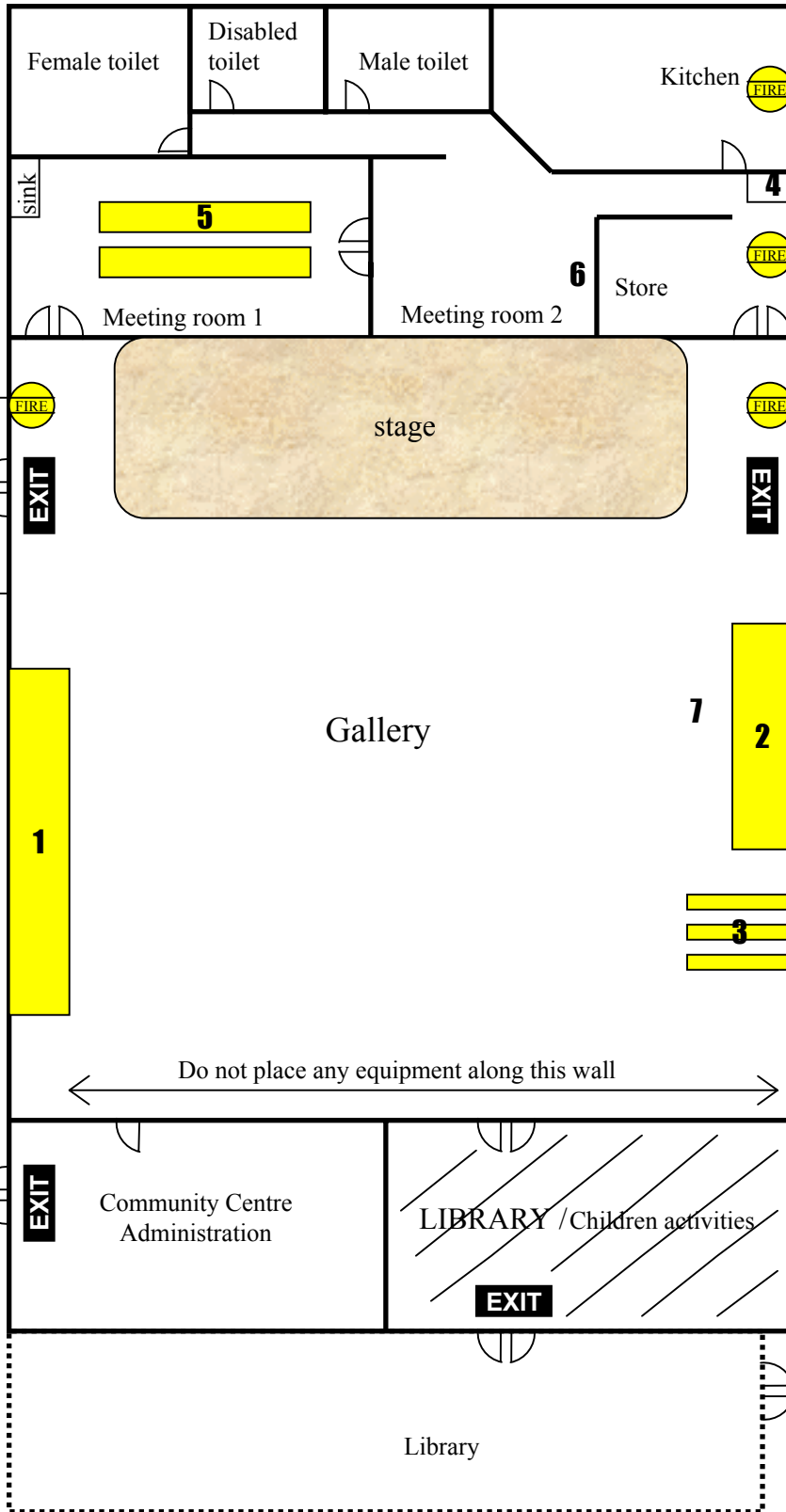



NORTH ADELAIDE COMMUNITY CENTRE

Phone : 8267 6813

Floor plan



KEY

-  Fire extinguishers
- 1,2** Chairs to be stacked no higher than 6 (OHS)
- 3** Partitions
- 4** Fuse box (main hall lights fuse no 9) & Cleaning cupboard
- 5** 2 rectangle tables
- 6** White arm chairs
- 7** Table trolley
- 8** Chair trolley
- 9** Rubbish bins

Tynte street